

# Safety around schools

## Providing safe school zones for all children



### Keep children safe in a school zone by:

- walking or cycling to school to decrease traffic congestion
- adhering to the 40km per hour zone when travelling in an operated school zone
- checking the restrictions set by the regulations and parking signs in the area and abiding by them
- not stopping or parking illegally – these actions will be noticed and infringements will be issued by Council.

### You should:

- always let your child out on the kerb side of the road
- never call your child from across the road – teach them to wait until you walk over to get them or to use the school crossing

- talk to your child about what they should do if you are not there on time.

### A children's crossing is a legal crossing when two flags are in place.

#### Teach your child to:

- always stand one step back from the kerb
- wait for the Crossing Supervisor to go out onto the crossing and blow their whistle (two short blasts), then cross the road
- not ride bikes, bounce a ball, fight, muck around or run across the crossing
- always stay within the lines of crossing and walk in front of the supervisor (never behind them)
- always be alert and listen to what the Crossing Supervisor says.

## Parking near a school.

- Do not park on or near a school crossing
- Do not double park and let your child out on the road.
- You cannot stay in the drop off/pick up zone for longer than two minutes or you will be issued with an infringement.

Make sure your child is waiting in the zone before you arrive

## Infringements

Council regularly patrols schools as part of our School Crossing Program. Council will issue infringements to anyone who does not obey signs or regulations. Infringements can be affixed to the vehicle or posted to the registered owner of the vehicle.

Offence	Offence description	Fine
---------	---------------------	------

Stopped in a 'no stopping' area	Drivers cannot stop, even briefly.	<b>\$165</b>
Stopped in a bus zone	Only public buses can stop here.	<b>\$99</b>
Parked for period longer than indicated	This is when you have overstayed the time limit indicated on the sign.	<b>\$83</b>
Stopped in a parking area for people with disabilities	You need a special disabled parking permit to park here. The permit number and expiry date must be visible from the outside.	<b>\$165</b>
Stopping on or near a children's crossing	A driver must not stop on a children's crossing, or on the road within 20 metres before, or 10 metres after the crossing.	<b>\$165</b>
Stopped on a footpath	You cannot leave your car standing on a footpath, it obstructs the path of pedestrians and is also very dangerous.	<b>\$99</b>
Stopped on or across a driveway or other way of access	No part of your vehicle can be parked or stopped across a driveway or other way of access.	<b>\$99</b>
Parked/stopped on a nature strip	A driver must not stop on a nature strip as it can obstruct the view of oncoming traffic and cause damage to infrastructure.	<b>\$99</b>

Updated October 2019

### Moonee Valley Language Line

العربية	Arabic	9280 0738	Ελληνικά	Greek	9280 0741	Español	Spanish	9280 0744
廣東話	Cantonese	9280 0739	Italiano	Italian	9280 0742	Türkçe	Turkish	9280 0745
Hrvatski	Croatian	9280 0740	Somali	Somali	9280 0743	Viêt-ngu	Vietnamese	9280 0746

All other languages 9280 0747

National Relay Service 13 36 77 or [relayservice.com.au](http://relayservice.com.au)

This publication is available in alternative accessible formats on request.

### Moonee Valley City Council

9 Kellaway Avenue | PO Box 126 Moonee Ponds VIC 3039

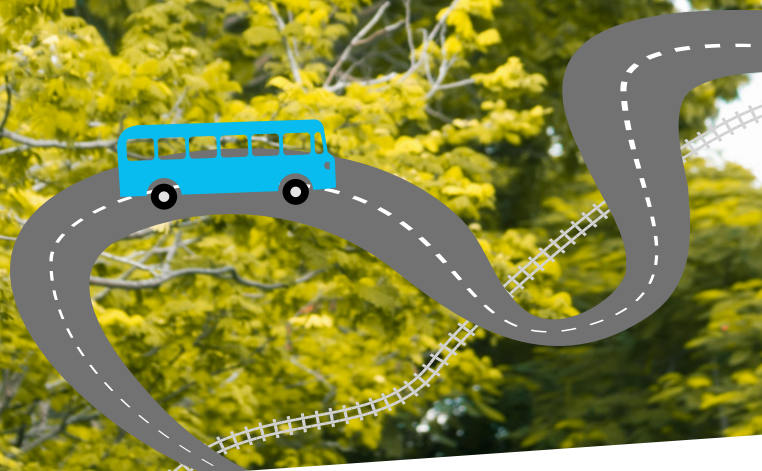
Phone 03 9243 8888 Fax 03 9377 2100

Email [council@mvcc.vic.gov.au](mailto:council@mvcc.vic.gov.au)    

[mvcc.vic.gov.au](http://mvcc.vic.gov.au)



# The drop off and pick up zone



# You might have noticed our pink signage and line markings for our drop off and pick up zone. This zone is not for waiting in.

Carers should always drop off or pick up their child/ren from the designated area and, in this zone:

- ask your child to head straight to the pick up zone once the bell rings – they will then be ready and waiting once you arrive
- plan to arrive after the bell rings, not before, as you cannot wait in the zone
- remain in your vehicles at all times
- move forward to join the queue so that other vehicles can get into the zone
- use the hand brake and put the vehicle in park when it is stationary
- do not double park
- do not park across a pedestrian crossing
- do not undertake a U-turn in close proximity to the school.

Students should:

- keep your seat belt on until the vehicle has stopped in the zone
- have your school bag and other items in a safe position on the floor and ready for you to take with you when the vehicle has stopped
- always get in and out of the vehicle through the safety door (the rear footpath-side door).

## What does the no parking sign mean?

It means that you cannot park in the zone during the times identified on the sign as it is to be used only as a pick up or drop off zone during those times.

You can only stay in this zone for two minutes. If you overstay this time limit, you could receive an infringement.



## Moonee Valley Language Line

العربية	Arabic	9280 0738	Ελληνικά	Greek	9280 0741	Español	Spanish	9280 0744
廣東話	Cantonese	9280 0739	Italiano	Italian	9280 0742	Türkçe	Turkish	9280 0745
Hrvatski	Croatian	9280 0740	Somali	Somali	9280 0743	Viêt-ngu	Vietnamese	9280 0746

All other languages 9280 0747

National Relay Service 13 36 77 or [relayservice.com.au](http://relayservice.com.au)

This publication is available in alternative accessible formats on request.

All other languages 9280 0747

National Relay Service 13 36 77 or [relayservice.com.au](http://relayservice.com.au)

This publication is available in alternative accessible formats on request.

## Moonee Valley City Council

9 Kellaway Avenue | PO Box 126 Moonee Ponds VIC 3039

Phone 03 9243 8888 Fax 03 9377 2100

Email [council@mvcc.vic.gov.au](mailto:council@mvcc.vic.gov.au)    

[mvcc.vic.gov.au](http://mvcc.vic.gov.au)